

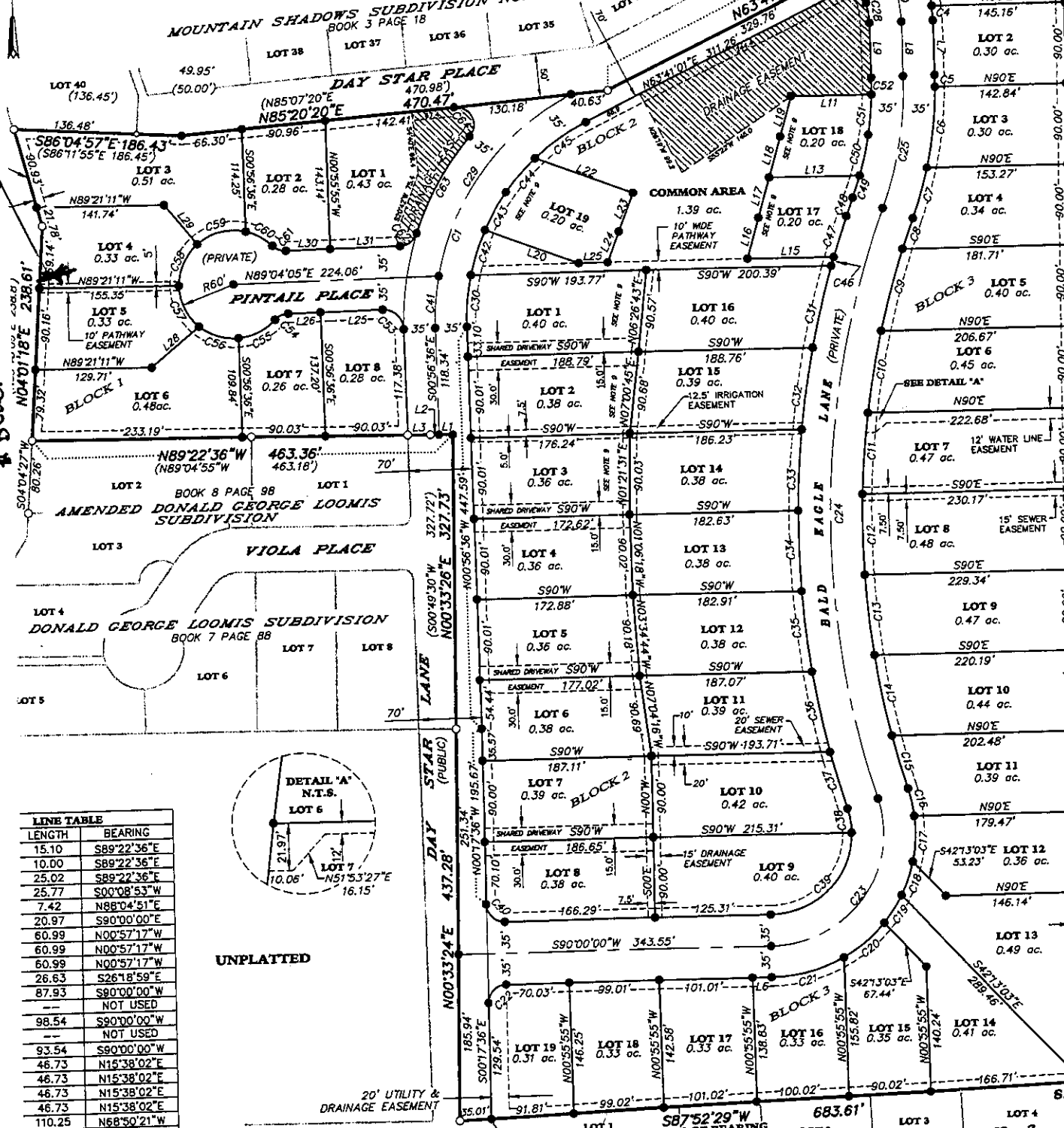
A PLAT SHOWING WILD WINGS SUBDIVISION

LOCATED IN SECTION 4
T. 15 N., R. 3 E., B.M.
VALLEY COUNTY, IDAHO
2010

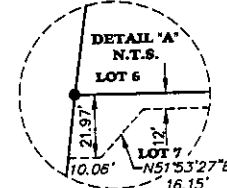


LAKE CASCADE

CASCADIA DOCK



LENGTH	BEARING
15.10	S89°22'36"E
10.00	S89°22'36"E
25.02	S89°22'36"E
25.77	S00°08'53"W
7.42	N88°04'51"E
20.97	S90°00'00"E
60.99	N00°57'17"W
60.99	N00°57'17"W
60.99	N00°57'17"W
26.63	S26°18'59"E
87.93	S80°00'00"W
--	NOT USED
98.54	S90°00'00"W
--	NOT USED
93.54	S90°00'00"W
46.73	N15°38'02"E
46.73	N15°38'02"E
46.73	N15°38'02"E
46.73	N15°38'02"E
46.73	N15°38'02"E
110.25	N68°50'21"W
--	NOT USED
115.16	S68°50'21"E
82.00	S21°09'39"W
82.00	S21°09'39"W
32.17	S90°00'00"W
67.73	N89°04'05"E
35.06	N89°04'05"E
68.84	N50°36'52"E
57.00	S36°39'17"E
48.10	N89°04'05"E
76.31	N89°04'05"E



UNPLATTED

HOMER LANE

WINDSONG SUBDIVISION NO. 2 PHASE 1 BOOK 9 PAGE 47 WINDSONG WAY

WINDSONG SUBDIVISION NO. 2 PHASE 3 BOOK 11 PAGE 25

